



Old Tyme Chronicle

Published by Big Walnut Area Historical Society

Volume XXIII

September 2023

From the President's Desk

by Rick Helwig

Summer Break is now over and a new school year has begun. Today our students are bussed miles away to go to a centralized school. This was not the case for students of old. Many students were taught in one room schools and had to walk three miles or more to get to the nearest school house.

In our part of Delaware County, Townships, were laid out in accordance to the 1785 Land Ordinance. The Land Ordinance established the basis for systematically surveying the land into square townships. Each township was 6 miles on a side and divided into thirty-six sections of 1 square mile or 640 acres. These sections could then be subdivided for re-sale by settlers and land speculators.

The ordinance was also significant for establishing a mechanism for funding public education. Section 16 in each township was reserved for the maintenance of public schools. Many one room schools located in Section 16 of their respective townships, although a great many of the school sections were sold to raise money for public education. Also, Section 36 of each township was also designated as a "school section." This section was to be sold and the proceeds were to be used to fund the public school of the township.

One Room Schools continued to be used into the 20th Century, but today, many of them have disappeared. There are still a few around, such as the Perfect School House on Old 3 C Hwy, and one that has been converted into a home near the 5 points intersection of Cheshire Rd, South Galena, and Rome Corners Rd. So the next time you are driving to an event at one of the BW schools, keep an eye out for the remains of one of these one room schools as you pass through Section 16.

See you at the Inn! Rick

Coming September 11

Remembering Flight 93 – Real American Heroes



Van Young

Van Young will present this program in the Myers Inn Meeting Room. He will tell the story, hour by hour, of one of the four planes hijacked by terrorists and used to attack America on September 11, 2001. Flight 93 is the only one of the four planes that did not accomplish its mission.

In this admission free program, you will learn how the brave passengers of Flight 93 sacrificed their lives so that other Americans could live. A chilling reminder of 9-11 and how shocking that day was for all of us. Twenty two years have passed, it's time to remember Americans at their finest.

Young, a well known presenter of historical programs to our local community, has made this program a unique combination of travel and history.

Myers Inn Museum faces the southwest corner of Sunbury Square at the corner of Columbus and Granville Streets.

Office Space in Myers Inn

A 300 square foot room at one of the busiest corner in town for only \$660 per month. The rent covers all utilities including basic internet. It has a private entrance from Granville Street and easy access to restrooms, kitchen and the meeting room. For more details email Damon at bower67@gmail.com or call 614-745-4375

Myers Museum Open 9-3 Labor Day!

So Hard To Say Goodbye

Myers Inn Museum lost a member, a friend, a docent, a planner and a patron this week when Marie Lacher lost her battle with cancer.

Before covid Marie and Sheldon were docents in the museum. Her favorite room was our kitchen to which they added a roomy cabinet for our collection of dishes for events. While she showed guests through the inn, Sheldon found things to do to make the museum better (wired lighting, added security, etc.)

Just before covid, Marie had co-chaired the annual Valentine's Day soup and sandwich luncheon. Although she had surgeries and chemo, she made cookies for Christmas-On-The-Square right after covid.

Her last official docent duty was to co-host third graders in the loom room with Lyndia O'Quinn.

As per Marie's wishes, there will be no public funeral or memorial service.

Thanks

Thanks for all the comments about Camp Clifton and how to keep cool in the hot summer. I learned of another swimming hole where employees of Nestles would go on a hot evening after work. They would grab a six pack and head for Bare-Ass Beach for a cool dip and to unwind under the trestle!

Big Walnut Area Historical Society

OFFICERS

Rick Helwig, President

Vice President to be selected

Chip Welch, Secretary

Bill Kavage, Treasurer

Polly Horn, Curator,

Webmaster

and Editor of Newsletter

TRUSTEES

Alice Lacher

Brad Orndorf

Chad Neeper

Damon Bower

David Martin

Mel Meyers

Roger Roberts

For Information Call

740-965-1154

leave a message or

email

Info@BigWalnutHistory.org

Calendar of Events

Sept. 4th 9-3:00 Labor Day Myers Inn Open House

Sept. 11 at 6:00 Monday, BWAHS Board of Trustees Meeting

Sept. 11 at 7:00 Program: "Flight 93— Real American Heroes," by Van Young - *see page 1 for details.*

**MYERS INN MUSEUM IS OPEN
IS OPEN - 3 ON SATURDAYS
Special Tours are available if you make
arrangements by calling 740-965-3582
and leave your phone number.**

Local History Question to Curator . . .

1st Methodist Church in Berkshire Corners

I know the early Methodists met in barns, houses, etc. and were served by circuit riders who traveled from church to church.

A Sunbury News article about Berkshire's Centennial (in 1904?) said: "The present Methodist Church was organized with twenty-five members, in 1858, by Rev. Amos Wilson and a church erected in 1860."

I know little of the building as a church but I first knew it as the Berkshire Township House until the new one was built recently south of Rt. 37.

Joining BWAHS is Easy

Circle One:

*Individual \$20, Family \$35, Business 10 or fewer employees \$50,
Business 11-99 employees \$75, Business 100 or more employees \$100,
Patron \$100, Other ?*

Name _____

Address or P. O. Box _____

Town _____ Zip _____

Phone (_____) _____

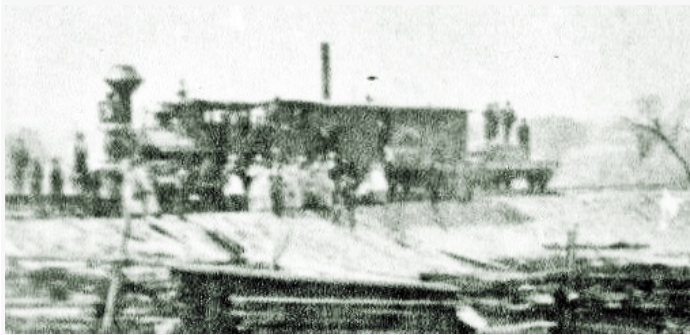
Email Address _____

Send with check for dues to BWAHS

P.O. Box 362

Sunbury, OH 43074

Attention Railroad Buffs!



First Train on C.A.&C. Tracks near Galena.

The first train chugged down the C.A.&C. (Cleveland, Akron and Columbus) Railroad on September 1, 1873 - 150 years ago. It was going south thru Condit Station, Sunbury, Galena and on to Westerville then Columbus.

To remember this event, a group is meeting in the Galena Diner at noon September 1st to celebrate the event, share memories of the railroad and railroad memorabilia.

They plan to visit the new Sunbury trestle on the bike path off Walnut Street and possibly visit the model train museum in the Railroad Depot in Sunbury.

Nick Sgandurra is spearheading the celebration. For

Celebrate the sesquicentennial

150 YEARS SINCE THE TRAIN CAME TO TOWN

Celebrate the anniversary of the completion of the railroad through Sunbury, Galena, and Westerville through to Columbus and what it meant for our communities!

Friday
SEPTEMBER 1ST 2023
12:00 - 3:00 PM
Galena Diner -
13 W. Columbus Street,
Galena O. 43021

WHAT TO EXPECT

- Enjoying lunch at Galena Diner
- Sharing history and memories
- Sharing of artifacts and pictures
- Checking out the newly completed bridge in Sunbury and the old railroad line
- Meeting fellow railroad and history enthusiasts



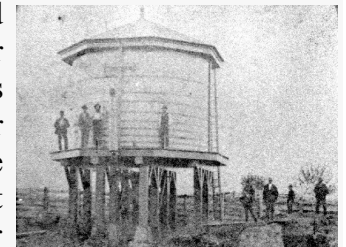
Contact Nick Sgandurra for details and to RSVP at:
614-937-5539 or cnsbandurra@gmail.com

details and to register for the event, Call him at 614-937-5539 or email him at cnsbandurra@gmail.com

Cleveland-MountVernon-Delaware Railroad was the forerunner of this railroad. Rail beds, had been built thru Porter Township in anticipation but the company chose a different route.

Communities had to raise money to have the train go thru their town. Both North Condit and South Condit vied for the honor but the Railroad decided going down the middle was the best so the new community, Condit Station, was formed around the railroad.

The Railroad selected Galena for the water tower for the trains. It was located near the Miller Park. The up-hill grade from Sunbury to Condit required another water tower in Condit.



Galena Water Tower

Galena photos above were from glass plates that were taken by various early photographers like Charles Perfect and W. H. Whittier. Prior to the 1966 Sesquicentennial of Sunbury, a group of local couples formed Buckeye Camera Club. Members were Chuck and Ruby Nettlehorst, Charles and Rheta Reese, Bob and Helen Hoover, Duane and Charlene Alward. Using glass negatives and early photos of the community and printed them as photos from THEN. They found the exact place the photo was taken and took a NOW. The book is in Community Library.

C.A.&C. became part of the Ohio to Erie Bike Trail. Preservation Parks has paved the 5.9 mile trail known as Sandel Legacy Trail with a beautiful trestle over the Big Walnut Creek.



Dedication of Sandel Legacy Trail on July 13, 2023

Back to School Memories

In my youth Labor Day meant end of summer and back to school. It was a magical time as we got school clothes and shoes, new pencils and crayons. Today the students are already settled in classes in August.

Rick Helwig (see page 1) reminded us of the one-room schoolhouses which dotted our landscape. Many were named for the land they were on, some for a teacher and others just Trenton #3.

When I was looking at Berkshire maps to locate the Berkshire Methodist Church (see page 2) I noted a school was just north of it - both building appear on R. Letts' property which he called Hard Scrable. Is that the **Hard Scrable School** Mom talked about?

My classmate Patty Shoaf Hardin sent me a photo of Porter's **Stone Jug School**, taken on Dec. 18, 1912.

It was on property on Chambers Road about a mile south of the Morrow County Line. It was in the pasture field where Shoafs kept cows. The door and



Front Two Rows left to right: Bertha Chambers, Florence White, Florence Haycock, Bertha Haycock, Philip Chambers, Jeanetta Chambers, Paul Haycock, Delbert Hines, Nellie Hines, Helen Xeigler.
Back Row: Grace McCrary, Ruth Zeigler, Merrill Conn, Harrison White, Florence McCrary, Burr Baker

windows were gone but the blackboard was still on the wall opposite the front door. Benches and desks as well as the more modern metal and wood desks used into the 1940's and 50's had been left in the building when the students went to Sunbury School. Stone for the school came from a quarry along the Big Walnut not far from the Chambers Road Bridge.



Kris Chapman, a member of the Board of Directors of Galena - Jo Davies County Historical Society in Galena Ill. and Rick Helwig, President of Big Walnut Area Historical with a Galena Brick mold and a brick

When the Board of Directors of the Galena - Jo Davies County Historical Society decided to build a new facility, they decided to cull items not from Galena, Ill. Through our website they learned the Galena Brick belonged here and ask if we would like it. Kris and her husband Don were going on a New England vacation and ask if they could drop off the mold and brick. Rick will help display the mold. Thank you Kris and Don.

Delaware County Schools Before Consolidation - 8 Decades Ago

"In Sunbury News"

September 17, 1941

2948 Students Attend Schools in Delaware Co.

Sunbury School was the largest in the County.

School	1941	1940	School	1941	1940
Sunbury	470	496	Berlin	184	208
Ashley	357	367	Ostrander	175	168
Radnor	302	313	Harlem	162	201
Orange	246	240	Powell	157	167
Brown	236	229	Hyatts	147	165
Galena	205	221	Norton	46	53
Bellpoint	189	177	Warrensburg	72	83
Total in County				943	1045